



Here for you

2022 Aetna® health plan resource guide

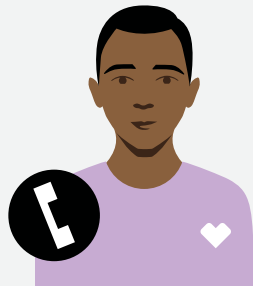
State of Illinois — Local Government Health Plan (LGHP)



2022 health plans at a glance

You have four health plans to choose from. The charts in this guide show plan benefits levels when you use the doctors and hospitals in our network. You can go outside the network, but you'll usually pay more. Your Open Enrollment materials from the State of Illinois will include more details.

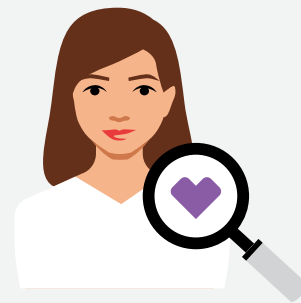
| HMO plan | | | |
|--------------------------------|--------------------------------------|-------------------------------------|--|
| Deductible | Individual: \$0 Family: \$0 | Outpatient surgery | 100% after \$300 copay |
| Coinsurance | 100% | Annual out-of-pocket maximum | Single: \$3,000 Family: \$6,000 |
| PCP office visit | 100% after \$40 copay | Prescription drugs | Retail: \$175 deductible per person <ul style="list-style-type: none"> • Reduced Tier 1: \$4 per 30-day supply (Maintenance drugs, see below) • Tier 1: \$15 per 30-day supply • Tier 2: \$30 per 30-day supply • Tier 3: \$60 per 30-day supply • Specialty Tier: \$120 per 30-day supply 31- to 90-day retail/mail-order supplies are 2.5 times copay. |
| Teladoc® | 100% after \$10 copay | | |
| Specialist office visit | 100% after \$45 copay | | |
| Emergency room visit | 100% after \$300 copay | | |
| Preventive services | 100% coverage | | |
| Inpatient services | 100% after \$350 copay per admission | | |



Behavioral health support

We all need mental and emotional support at times. Your plan includes behavioral health resources to help with challenges like grief and loss, stress, depression and anxiety, substance misuse, and more. Log in to your Aetna® member website to:

- Check your emotional well-being
- Improve your mood with self-check tools
- Find caregiver support and resources
- Watch inspirational videos
- Read empowering stories



Questions? We're here to help.

Health benefits information:
[AetnaStateofIllinois.com](https://www.aetna.com/illinois)

Health benefits questions:
 Aetna Member Services: **1-855-339-9731 (TTY: 711)**, Monday through Friday, 7 AM to 5 PM CT

Enrollment information or to make changes to your benefits:

Contact MyBenefits Marketplace Service Center: **1-844-251-1777**

Open Enrollment hours: 7:30 AM to 7:00 PM CT

| | OAP | | | LCDHP (HD) | | LCHP | |
|-------------------------------------|---|---|---|---|---|--|--|
| | Tier 1 | Tier 2 | Tier 3 | In network | Out of network | In network | Out of network |
| Deductible | Individual: \$0 Family: \$0 | \$400 per enrollee | \$600 per enrollee | Individual: \$2,000 Family: \$4,000 | Individual: \$4,000 Family: \$8,000 | \$1,000 per benefits participant | \$1,000 per benefits participant |
| Coinsurance | 100% | 80% of network charges | 50% of MAC | 80% of network charges | 50% of MAC | 80% of network charges | 50% of MAC |
| PCP office visit | 100% after \$40 copay | 80% of network charges after deductible | 50% of MAC after deductible | 80% of network charges after deductible | 50% of network charges after deductible | 80% of network charges after deductible | 50% of MAC after deductible |
| Teladoc® | 100% after \$10 copay | Not covered | Not covered | 80% of network charges after deductible | 50% of network charges after deductible | 80% of network charges after deductible | 50% of MAC after deductible |
| Specialist office visit | 100% after \$45 copay | 80% of network charges after deductible | 50% of MAC after deductible | 80% of network charges after deductible | 50% of MAC after deductible | 80% of network charges after deductible | 50% of MAC after deductible |
| Emergency room visit | 100% after \$300 copay | 100% after \$300 copay | 100% after \$300 copay | 80% of network charges after deductible | 80% of network charges after deductible | 80% of network charges after \$400 ER deductible; plan-year deductible applies | 80% of network charges after \$400 ER deductible; plan-year deductible applies |
| Preventive services | 100% coverage | 100% coverage | Covered under Tiers 1 and 2 only | 100% coverage | No coverage | 100% coverage | No coverage |
| Inpatient services | 100% after \$350 copay per admission | 80% of network charges after \$400 copay and deductible | 50% of MAC after \$500 copay and deductible | 80% of network charges after deductible | 50% of MAC after deductible | 80% of network charges after \$350 hospital deductible; plan-year deductible applies | 50% of MAC after \$600 hospital deductible; plan-year deductible applies |
| Outpatient surgery | 100% after \$300 copay | 80% of network charges after \$300 copay and deductible | 50% of MAC after \$300 copay and deductible | 80% of network charges after deductible | 50% of MAC after deductible | 80% of network charges after deductible | 50% of MAC after deductible |
| Annual out-of-pocket maximum | Individual: \$7,250 Family: \$13,750 | Individual: \$7,250 Family: \$13,750 | Not applicable | Individual: \$5,000 Family: \$8,000 | Individual: \$7,000 Family: \$14,000 | Individual: \$2,000 Family: \$4,000 | Individual: \$6,000 Family: \$12,000 |
| Prescription drugs | Administered through the state self-insured prescription benefits manager | Administered through the state self-insured prescription benefits manager | Administered through the state self-insured prescription benefits manager | Administered through the state self-insured prescription benefits manager | Administered through the state self-insured prescription benefits manager | Administered through the state self-insured prescription benefits manager | Administered through the state self-insured prescription benefits manager |

Note: MAC is the maximum allowable charge.



Find a doctor

It's easy to find a network provider. Using the provider search tool, you can look for doctors, specialists, walk-in clinics and urgent care centers, hospitals, and even labs.

1. Go to [AetnaStateofIllinois.com](https://www.aetnaillinois.com) and click on **Find a Doctor** at the top of the page.
2. Click on your plan's link to access the provider search tool.
3. Enter your ZIP code in the **Continue as a guest** section.
4. Enter your doctor's name or the type of provider you'd like to find. You can also select a provider category for an automatic search.





Plan resources at your fingertips

Aetna® Member Services

Get answers to all your benefits and claims questions when you call **1-855-339-9731 (TTY: 711)**, Monday through Friday, 7 AM to 5 PM CT.

Your Aetna member website

After you enroll in a health plan, register at **AetnaStateofIllinois.com**. Then log in anytime to confirm who's covered under your plan, check the status of claims, view Explanation of Benefits (EOB) statements and more.

Cost comparison

Did you know that health care providers can charge very different costs for the exact same service? Compare costs on your Aetna member website and know what to expect before you receive care. Just search by name, type of provider or care needed.

Aetna HealthSM app

Download the app for all the best features of your member website on the go. View your ID card, find care, make appointments and more — right from your phone.

Teladoc®

Teladoc is a service that connects you to board-certified primary care doctors, 24/7. Teladoc doctors can treat many non-emergency medical issues by phone or video chat, including colds, flu, bronchitis, infections and more. Set up your account at **Teladoc.com/Aetna**, or call **1-855-835-2362** to get started.

You can also download the free Teladoc app on your mobile device.



Enjoy these wellness programs and extras

24-Hour Nurse Line

Speak with a registered nurse about health issues — anytime, day or night. While only your doctor can diagnose, prescribe or give medical advice, our nurses can provide information on a variety of health topics.

Aetna One® Choice

If you have an upcoming hospital stay or a chronic condition, like diabetes, high blood pressure or asthma, an Aetna One Choice nurse or consultant can help. Your personal nurse doesn't replace your doctor but can help you stay on track with your treatment plan and help coordinate your care.

Simple Steps To A Healthier Life® program

Want to leave those unhealthy habits behind for good? Try Simple Steps To A Healthier Life. You'll learn strategies to manage your weight, deal with stress, quit smoking and more.

Aetna member discounts*

As an Aetna member, you can take advantage of members-only savings on vision and hearing care, gym memberships, weight-management programs, natural products and services, vitamins, and much more.

***DISCOUNT OFFERS ARE NOT INSURANCE.** They are not benefits under your insurance plan. You get access to discounts off the regular charge on products and services offered by third-party vendors and providers. Aetna makes no payment to the third parties — you are responsible for the full cost. Check any insurance plan benefits you have before using these discount offers, as those benefits may give you lower costs than these discounts.

TTY: 711

To access language services at no cost to you, call 1-855-339-9731 .

Para acceder a los servicios de idiomas sin costo, llame al 1-855-339-9731 . (Spanish)

如欲使用免費語言服務，請致電 1-855-339-9731 。 (Chinese)

Aetna Behavioral Health refers to an internal business unit of Aetna. PayFlex Systems USA, Inc. is an affiliate of Aetna Life Insurance Company.

Not all services are covered. See plan documents for a complete description of benefits, exclusions and limitations of coverage. Plan features and availability may vary by location and are subject to change. Providers are independent contractors and are not agents of Aetna®. Provider participation may change without notice. Aetna does not provide care or guarantee access to health services. Estimated costs are not available in all markets or for all services. We provide an estimate for the amount you would owe for a particular service based on your plan at that very point in time. It is not a guarantee. Actual costs may differ from an estimate for various reasons, including claims processing times for other services, providers joining or leaving our network, or changes to your plan. Health maintenance organization (HMO) members can only get estimated costs for doctor and outpatient facility services. Discount vendors and providers are not agents of Aetna and are solely responsible for the products and services they provide. Discount offers are not guaranteed and may be ended at any time. Aetna may get a fee when you buy these discounted products and services. Health information programs provide general health information and are not a substitute for diagnosis or treatment by a health care professional. Refer to **Aetna.com** for more information about Aetna plans.

Aetna complies with applicable federal civil rights laws and does not discriminate on the basis of race, color, national origin, age, disability or sex.

Teladoc® is not available to all members. Teladoc and Teladoc physicians are independent contractors and are not agents of Aetna. Visit **Teladoc.com/Aetna** for a complete description of the limitations of Teladoc services. Teladoc, Teladoc Health and the Teladoc Health logo are registered trademarks of Teladoc Health, Inc.

